



Milton Traffic Mobility Study

Purpose and Background

The purpose of this study was to evaluate the mobility and circulation of traffic in Milton. The study incorporates existing Milton transportation conditions, expected and proposed developments, previously completed transportation studies and current issues identified within Milton.

Summary of Analysis

Field observations were conducted to witness the extent of the issues identified within Milton and to identify any additional issues with mobility and circulation. The planning-level impacts of the traffic from expected and proposed development was analyzed. This analysis was used in conjunction with previously completed studies in the area in order to recommend improvements that will be needed to maintain a safe, efficient, and effective roadway network. The data and analysis provided to the City of Milton and KYVOA in this study support the below recommendations needed to ensure that Milton grows in a smart and safe manner.

Roadway Link Information

Segment	From	To	Class	Thru Lanes	Speed Limit	Capacity	Existing ADT	Existing V/C	Horizon Year ADT	Horizon Year V/C
North-South Corridors										
Bill Blenko Drive	James River	US-60	Major Collector	1/11	35	16000	4630	0.29	5580	0.35
SR-13	US-60	I-64	Minor Arterial	1/1	40	16000	13050	0.82	18530	1.16
East-West Corridors										
US-60	Project Limits	Sunset	Minor Arterial	1/1	40	16000	8980	0.56	10940	0.68
US-60	Sunset View	Stewart St	Minor Arterial	1/1T	40	16000	8510	0.53	10940	0.68
US-60	Stewart	Bill Blenko	Minor Arterial	2/2	40	32000	8510	0.27	10940	0.34
US-60	Bill Blenko	SR-13	Minor Arterial	2/2T	40	32000	14740	0.46	17480	0.55
US-60	SR-13	Trenol Rd	Minor Arterial	1/1T	40	16000	11130	0.70	16990	1.06
US-60	Trenol Rd	Morris Memorial	Minor Arterial	1/1	55	16000	11130	0.70	16990	0.89
US-60	Morris Memorial	Project Limits	Minor Arterial	1/1	55	16000	11130	0.70	14200	0.89
James River Tnpk	Bill Blenko	Morris Memorial	Major Collector	1/1	35	16000	3320	0.21	4260	0.27

Proposed Development - The Grand Patrician Resort



Recommendations

Key Improvements:

1. Implementation of the Culloden Interchange
2. John Morris Road
 - a. Access Management
 - b. Widening of roadway to five lanes
 - c. Improvements to the John Morris Road and US-60 intersection
3. Morris Memorial Road (Required as part of The Grand Patrician Resort development)
 - a. Curve warning signs and advisory speed plates
 - b. Replacement of the existing one-lane bridge with a two-lane bridge or culvert
4. Sight Distance Improvements on US-60 east of John Morris Road

Minor Improvements:

1. Restrict the Trenol Road loop to one-way
2. Pavement marking improvements to the intersection of Pine Haven Drive and US-60
3. Installation of vehicle detection for the northbound left turn lane of the Harbour Way and John Morris intersection
4. Installation of stop bars at the intersection of Harbour Way and John Morris Road
5. Support of the expansion efforts of TTA

Other Improvements:

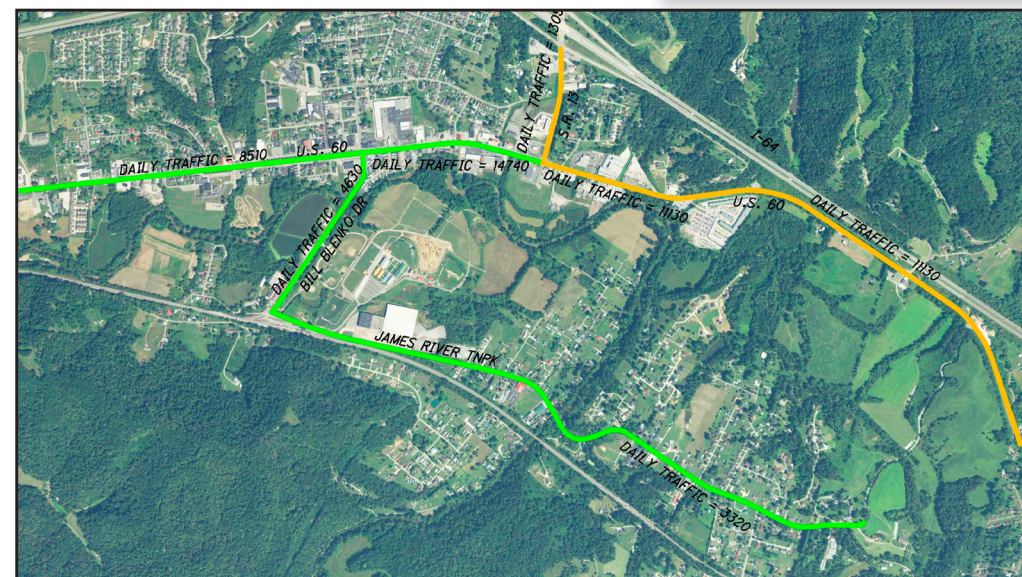
- Implement the major recommendations from the CDM Smith Non-Motorized Mobility Study

For Future Study:

1. The Grand Patrician Resort Traffic Impact Study
2. Eastbound Left Turn Lane on US-60 onto West end of North Main Street

Volume-to-Capacity Ratio Maps

2019



2039

